



**LOCKE & ENGLAND**  
AUCTIONEERS & VALUERS

## Antique Furniture, Collectors' Items, Jewellery, Coins & Watches

### **VIEWING**

Saturday 23rd March 10am – 2pm

Tuesday 26th March 9am – 5pm

Wednesday 27th March 9am – 7pm

Morning of sale from 9am

### **AUCTION**

Thursday 28th March

Commencing at 11.00am

### **CATALOGUE**

Available online at

[www.leauction.co.uk](http://www.leauction.co.uk)

## INFORMATION FOR BUYERS

### BUYER BEWARE

All lots in this sale are 'sold as seen' with any imperfections, faults or losses. No warranties are given. Bidders are deemed to be satisfied with the condition of any lots on which they bid.

### CLIENT REGISTRATION

We register all buyers and sellers with a permanent client number that can be used to buy or sell at our sales. To register there is a £5 charge and we require proof of identity and address such as a photographic driver's licence and a recent utility bill.

### COMMISSION BIDS

Purchasers unable to attend the sale may leave written instructions to bid with the auctioneers on the slips provided in the saleroom. Please note you must be registered in order to leave commission bids.

### BUYERS PREMIUM

A buyers' premium at 17.5% plus VAT, will be added to the bid price of each lot.

Lots purchased online will in addition attract a 5% plus VAT fee.

### CONDITION REPORTS

We regret that we are unable to process requests for condition reports received after 1.00pm on the day preceding the sale.

### ARTIST RESALE RIGHTS (ARR)

In certain instances, where an artist is still alive, royalties can apply under the Artist Resale Right Regulations 2006. If these regulations apply, the buyer of the lot agrees to pay the auctioneer an amount equal to the resale royalty and we undertake to the buyer to pay this sum to the artist's collection agent.

### COLLECTION

On sale day until 5pm and on the following Friday and Monday 9am - 5pm.

The auctioneers may charge storage on items not cleared by this time.

### POSTAGE & PACKING

All postal mailing is handled by:

Mail Boxes 01295 277 733 info@mbabanbury.co.uk

Clients requiring delivery of furniture should enquire at the office.

### PAYMENT

Attention is drawn to the Auctioneers Conditions of Sale in this catalogue and posted on the premises.

In particular, it is emphasised that all accounts must be settled on the day of sale. Sale currency is GBP.

The following payment methods are accepted :

- Cash
- Debit card (in person)
- Direct bank transfer

We do not accept payments by credit card or any card payments over the telephone.

Bank transfer details are as follows :

Bank Name :	Metro Bank Plc
Account Name :	Locke & England
Sort code :	23-05-80
Account # :	29033964

Please quote both the auction number and your invoice number as reference. Failure to do so may delay goods being released. Please be aware that clients making international transfers will be liable for any bank imposed charges.

### ONLINE REGISTRATION

In completing the online bidder registration you:

I. Confirm that you have sufficient funds to complete any purchases,

II. Agree to abide by the auctioneer's conditions of sale and terms and conditions,

III. Agree to make payment by the methods and timescales stated above.

IV. Understand that failure to make payment and to collect your purchases will lead to your accounts with the-saleroom.com and Locke & England being blocked, and that you will be liable for any expenses or losses incurred by the auctioneers.

### GLOSSARY OF TERMS OF WORKS OF ART

Terms used in this catalogue have the following meanings.

Please note that all statements in this catalogue, regarding authorship, attribution, origin, date, age, provenance and condition are statements of opinion and are not treated as a statement of fact.

#### 1. A N ARTIST

In our opinion, the work is by the artist.

#### 2. ATTRIBUTED TO A N ARTIST

In our opinion, the work is of the period of the artist which may be whole or in part the work of the artist.

#### 3. STUDIO, (CIRCLE OR WORKSHOP) OF A N ARTIST

In our opinion, the work is of the period and closely relates to his style.

#### 4. SCHOOL OF A N ARTIST

In our opinion, the work is by a pupil or a follower of the artist.

#### 5. MANNER OF A N ARTIST

In our opinion, the work is in the style of the artist and is of a later period.

#### 6. AFTER A N ARTIST

In our opinion, this work is a copy of the artist.

#### 7. ASCRIBED TO A N ARTIST

In our opinion, this work is not by the artist, however, previous scholarship has noted this to be a work by the artist.

#### 8. SIGNED (OR DATED)

The work has a signature (or date) which is in our opinion is genuine.

#### 9. BEARS SIGNATURE (OR DATE)

The work has a signature (or date) which in our opinion is not authentic.



## CONDITIONS OF SALE

Affecting purchasers and others attending the sale premises.

1. Purchasers will be deemed:

- a) To have inspected their lots prior to the sale; and
- b) To have accepted that lots are sold with all faults and imperfections specifically mentioned or not irrespective of whether they bid in person, by commission, online or through an agent.

2. All goods are second hand and sold without warranty unless otherwise stated in the sale catalogue or by the auctioneer from the rostrum. Any implied warranty, condition or other term is excluded except where to do so would be unlawful.

3. The auctioneers undertake that care has been taken to see that catalogue descriptions are accurate and reliable however these are matters of opinion only and shall not be taken to be statements of fact.

4. The auctioneers act as agents to the vendor and shall not incur liability to any purchaser for any statement, representation or warranty as to title, quality or otherwise of any lot made on behalf of and with the vendor's authority. Likewise the auctioneers shall incur no liability to a purchaser arising from any defect in goods sold save in the event of negligence on the part of the auctioneers or their employees. Any liability therefore shall be a matter for dispute between purchaser and vendor only.

5. The auctioneers reserve on behalf of themselves and the vendors the following rights:

- a) To sell subject to a reserve price
- b) To bid on behalf of a vendor and/or purchasers
- c) To refuse any bid
- d) To rearrange, consolidate, divide, add or withdraw any lots or vary the order of the sale.
- e) To exclude any person from the premises if there be good reason to do so.

6. The auctioneer shall regulate the bidding and shall determine from time to time the appropriate increment needed to advance the bidding.

7. The person making the highest accepted bid shall be the purchaser as defined in these conditions.

8. If a dispute arises as to any bidding then at the discretion of the auctioneer either:

- a) The lot to which the disputed bid relates shall immediately be offered again, or
- b) The auctioneer shall determine the dispute and his decision shall be final and binding on all parties

9. a) At the fall of the hammer the purchaser is required to give their Client Registration Number. If they have bid on behalf of another person or company they should make this clear to the auctioneer at the time. If they fail to do so then they will be held personally liable for the purchase under the terms of these conditions.

b) If, and as required by the auctioneer at the fall of the hammer, the purchaser shall pay to the auctioneer all or part of the purchase price plus VAT and buyers' premium.

c) Any such payment made at the fall of the hammer may be treated, at the auctioneers' discretion, as a general deposit against all purchases, made by that purchaser on the day.

d) All lots must be paid for in cash, or in other manner acceptable to the auctioneers, on the day of sale and before delivery is given.

e) Failure by the purchaser to comply with sub clause a) and b) shall entitle the auctioneer to cancel the sale and, at his discretion, to immediately re-offer the lot in question for sale by auction.

10. No transfer of lots or sub-sale by any purchaser is recognised by the auctioneers. Purchasers shall remain liable under these conditions in respect of their own purchase under the hammer.

11. Private treaty sales shall be subject to these conditions of sale where applicable.

12. All lots will be at the purchaser's risk from the fall of the hammer. Purchasers are therefore advised to check that they have adequate insurance cover.

13. Purchasers will not normally be permitted to remove goods until their payment has cleared through the bank. Whether removal is permitted or not, ownership of goods will not be deemed to pass to the purchaser until their payment has cleared.

14. All lots must be cleared from the sale premises at the purchaser's expense by the time stipulated or agreed by the auctioneers.

15. a) If a purchaser fails to comply with any of the preceding conditions the auctioneers may cause the lot in respect of which the failure is made to be resold by public or private sale without warranty or reserve and without notice to the purchaser.

b) If upon resale a lower price is obtained for any lot than was obtained on the first sale, the difference in price together with all costs and charges attending the resale shall be a debt due from the purchaser in default at the first sale.

c) Alternatively the auctioneers may, at their discretion, store the lot and recover reasonable charges for so doing from the purchaser.

16. All Sales shall be deemed to have been made in England and the Parties to the Sale hereby submit to the jurisdiction of the English Courts. English Law shall be the proper law of the Contract of Sale.



**LOCKE & ENGLAND**  
AUCTIONEERS & VALUERS

**Leamington Spa Auction Centre**  
12 Guy Street, Leamington Spa  
Warwickshire, CV32 4RT

+44 (0) 1296 889 100  
[www.leauction.co.uk](http://www.leauction.co.uk)

**6**

Auction Details  
March 2024 | Antique Furniture & Collectors' Items



Furniture & Rugs





**1** An Art Nouveau mahogany and inlaid display cabinet, the shaped glazed doors flanked by sinuous, foliate topped supports, the interior with plush lining, on square legs with inverted mortar board feet, 123cm wide, 211.5cm high £150 - £250

**2** An early 19th century mahogany chest of drawers, with two short over four long graduated oak lined drawers, on splayed bracket feet, 107cm wide, 120.5cm high, 52.5cm deep £100-£150



**3** An 18th century oak side table, the two plank top with moulded edge over two drawers, on square chamfered legs, 85cm wide £100-£150

**4** A mid 18th century oak chest of drawers, with crossbanded decoration and later bone escutcheons, on bracket feet, 99.5cm wide, 99cm high, 55.5cm deep £100-£150

**5** A late 19th century oak metamorphic library chair, converting to four trapezoidal steps, the backrest carved with heraldic lion on cushion above legend, the armrests terminating in lion mask on foliate scroll supports, and channelled sabre front legs, 55cm wide, 86cm high £150-£250



**6** An early 20th century continental oak Art Deco display cabinet, with carved stylised leaves and panelled sides with moulded decoration, the interior with adjustable shelves, the doors with bevelled glass and decorative brass hinges, 96cm wide, 209cm high, 43cm deep £200-£300

**7** An 18th century oak dresser, with moulded pediment over three shelves and iron hooks, the base with five drawers above an open potboard, 176.5cm wide, 210cm high, 43.5cm deep £300-£500



8



9



10

10

Furniture & Rugs

March 2024 | Antique Furniture & Collectors' Items



13

**8** An Aesthetic period ebony and amboyna veneered card table, the top with shallow carved bellflower and scroll decoration and with applied brass beading to the edge, the frieze with applied jasperware plaque, opening to a blue baize interior, on ebonised and gilt highlighted supports and feet, with ceramic castors, 92cm wide, 72cm high £100-£150

**9** An Aesthetic period armchair, the part gallery back with turned spindles and shallow carved foliate motifs, with sweeping buttoned armrests, with horsehair and sprung seat, on turned front legs with ceramic castors, 64cm wide, 78cm high £100-£150

**10** A 19th century oak chaise longue, the frame with a continuous band of oval foliate carved bosses, the scroll end with applied silver coloured metal plaque inscribed 'Oak From The House In Edinburgh Erected 1490 Occupied By John Knox From 1559 Till His Death 24th November 1572', on bobbin turned legs terminating in brass castors, 169cm long, 82cm high £150-£250

**11** A reproduction oak dining table, having a well figured oval top on a fixed base with bobbin turned legs united by an X shape stretcher, 182.5cm wide, 75cm high, 122cm deep £150-£200

**12** A set of four reproduction oak ladderback dining chairs, with drop in rush seats, 97.5cm high £50-£80

**13** A late Victorian oak partners desk, with green tooled leather writing surface, above a series of drawers opposing dummy drawers and cupboard doors, with brass gothic ring handles, 137cm wide, 78cm high, 90cm deep £200-£300

**14** An 18th century oak and mahogany crossbanded dresser, the two plank top with moulded edge above two short drawers, on cabriole legs, with panelled sides, 139cm wide, 83.5cm high, 48.5cm deep £200-£400

Furniture & Rugs

All estimates exclude buyer's premium of 21% including VAT which is payable in addition

11





16

**15** A Victorian chaise longue with matching armchair en-suite, each with mahogany show frame, with horsehair and sprung stuffing and upholstered in a light cream floral material, on bulbous reeded legs terminating in brass castors, the chaise approximately 186cm long, 86cm high, the chair 109cm high £200-£300

**16** A Victorian conversation settee, with carved mahogany show frame, with horsehair and sprung filling, upholstered in a light yellow material with white ribbons on carved cabriole legs terminating in brass castors, approximately 182cm wide, 88.5cm high £200-£300

**17** An Edwardian classical revival mahogany side table, of rectangular form, on square fluted legs on block feet, (with replacement top), 106.5cm wide, 75cm high, 53cm deep £50-£80

**18** A 19th century mahogany twin pedestal desk, stamped for Heal & Son, London, with three frieze drawers and three drawers to each pedestal, on plinth base, 121.5cm wide, 73cm high, 53.5cm deep £100-£200

**19** A Victorian Aesthetic period carved oak purdonium, with cast brass handles, 35cm wide, 50.5cm high £30-£50

**20** A Victorian beech bergere armchair, with shaped top rail, on brass castors, 109cm high £30-£50

**21** An early 19th century rosewood card table, with turn over top, on a plain column with tongue collar above a quadripartite base with lion paw feet on brass castors, 91cm wide, 73cm high £70-£100



21

**22** A 19th century mahogany and crossbanded breakfast table, the drop leaves with rounded corners, with a frieze drawer opposing a dummy drawer, on a short stem with four downswep legs on brass castors, reduced in height, 110.5cm wide (leaves open), 59cm high £30-£50

**23** A Victorian inlaid walnut music cabinet, with brass rod gallery, above a single drawer and glazed door enclosing shelves, the plinth base raised on ceramic castors, 51.5cm wide, 98cm high £50-£80

**24** A Victorian walnut veneered vitrine, with bellflower and strung decoration, with applied gilt metal corbals, the interior lined and with two fixed glass shelves, 76cm wide, 102cm high, 31cm deep £100-£150



22

**25** A George III oak bureau bookcase, the open bookcase top fitted with a 30 hour brass lantern clock, the 10" square brass dial with single hand inscribed 'Geo Green Ross', beneath a hand inscribed ink label '1765, Fra Green, Bedworth, Fecit', the bureau with fitted interior above four graduated long drawers, on shaped bracket feet, 94cm wide, 205cm high £300-£500



27



26

**26** An early 20th century reproduction oak box settle, with a narrow arched frieze above three panels, the seat flanked by downswept arms and with hinged lid, with panelled front and sides, 109cm wide, 105.5cm high £100-£150

**27** An early 20th century reproduction oak Welsh dresser, the plate rack with boarded back, above the base with an arrangement of five drawers above the pot board, with turned supports, 143cm wide, 196cm high, 50.5cm deep £200-£300



35

**28** A late Victorian oak buffet, with blind fretwork decoration, a long frieze drawer, with bulbous cup and cover supports united by a lower tier, on short turned legs, 136.5cm wide, 136.5cm high, 52.5cm deep £100-£150

**29** A late Victorian oak wall mounted cupboard, the pediment with carved egg & dart decoration above four blind fretwork panels doors, each side pierced with holes, 118cm wide, 147cm high, 40cm deep £80-£120

**30** A late Victorian carved and ebonised oak bureau bookcase, the glazed doors enclosing adjustable shelves, the bureau with four long drawers with carved mask handles, on shaped bracket feet, 100cm wide, 220.5cm high, 50cm deep £80-£120

**31** A late Victorian carved and ebonised oak purdonium/seat, decorated with carved masks, foliate scrolls and panels, 44cm wide, 73cm high, 39.5cm deep £40-£60

**32** An early 18th century carved oak coffer, with foliate arched frieze above three carved panels, on high stile legs, 121cm wide, 71cm high, 49.5cm deep £100-£150

**33** A Victorian mahogany shop display counter, the top with applied moulded edge above three glazed doors and glass panel sides, the rear with tongue and groove slats, on a plinth base, 172cm wide, 86.5cm high, 64cm deep £100-£150

**34** A late Victorian mahogany inverted breakfront desk, with tooled green leather writing surface, the frieze drawer flanked by four bow fronted drawers to each side, the plinth base raised on castors, 121cm wide, 70.5cm high, 53.5cm deep £50-£80

**35** A late 18th century oak longcase clock, the painted arch dial inscribed for 'Robotham, Leicester', with subsidiary seconds dial and date wheel, with eight day movement chiming on a bell, the trunk door flanked by quarter fluted columns, on a plinth base, 55cm wide 225cm high Signed only Robotham, this is likely to be for Charles Robotham, he is not listed in Watchmakers and Clockmakers of the World, although British Clockmakers' & Watchmakers' Apprentices records him taking six apprentices between 1780 and 1796. £150-£250

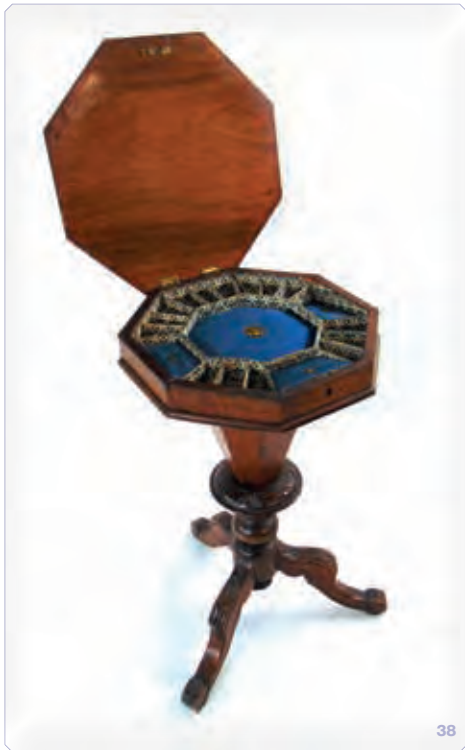




37

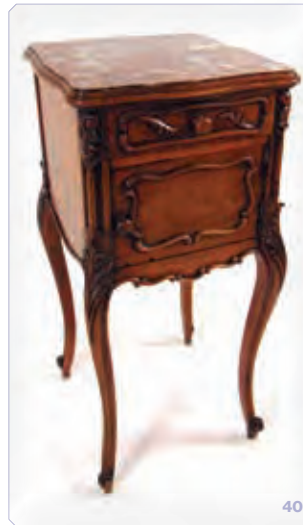
**36** An early 20th century French Louis XV style serpentine fronted corner vitrine, with gilt metal mounts and material lined interior, 53.5cm wide, 151.5cm high, 32cm deep £80-£120

**37** A Victorian rosewood Davenport, with fretwork gallery above a tooled red leather writing surface, the satin birch interior with a single drawer and two dummy drawers, a hinged drawer pen compartment to the right side, on turned and carved supports united by a stretcher, raised on ceramic castors, 53.5cm wide, 86.5cm high £100-£150



38

**38** A Victorian trumpet form walnut veneered and inlaid sewing table, the octagonal top with checker board inlay opening to reveal paper lined compartments, on three carved legs, 44.5cm wide, 74cm high £50-£80



40

**39** A late 18th century Welsh oak longcase clock, the square painted dial inscribed for 'Wat(kin) Owen, LLanrwst', with subsidiary seconds dial and calendar wheel, with eight day movement chiming on a bell, 55cm at widest point, 211.5cm high £100-£150

**40** An early 20th century French oak and chestnut pot cupboard, with inset rouge marble top, above a short drawer and cupboard with ceramic lined interior, with quarter veneered sides, on long cabriole legs, terminating in scroll feet, 39.5cm wide, 85cm high, 39cm deep £50-£80



41

**41** A George III oak settle, with five panel back, the shaped armrests on bobbin turned supports, with rexine covered seat cushion, on turned legs, 179.5cm wide, 105cm high £200-£300

**42** A 17th century style walnut chair, with carved and pierced foliate scroll top rail above a similar styled framed cane back flanked by barley twist supports with acorn finials, with carved foliate decoration throughout the seat and front rail, 123.5cm high £50-£80

**43** A 17th/18th century oak court cupboard, with stylised carved leaf frieze flanked by turned pendants, above a central door carved with an archer taking aim at an owl in a tree, flanked by canted carved panel sides, the base with a single cupboard door framed by guilloche and foliate carved bands, on high stile legs, 118cm wide, 170.5cm high, 49.5cm deep £200-£300

**44** A 19th century rosewood tilt top table, with crossbanded edge and brass stringing, on an octagonal column leading to a triform base with bun feet, 105.5cm diameter, 68.5cm high £100-£150



45



47

**45** An Indian Tabriz style mercerised cotton rug, with central red and cream medallion against a pale turquoise ground, with red ground foliate borders, 225cm x 152cm  
£150-£250

**46** A George III mahogany and inlaid knife box, with serpentine front and fitted interior, with silver plated ring handle and escutcheon, on three shaped feet, 22.5cm wide, 38.3cm high £100-£150



46



51

**47** A George III mahogany desk, the top with applied moulded edge, above a long drawer fitted with a beize writing surface, sliding back to reveal vacant compartments, the right outer side of the drawer with a swing out fitted compartment, all above three oak lined and cockbeaded drawers with brass handles, opposing dummy drawers to the rear, on bracket feet, 115cm wide, 78.5cm high, 62.5cm deep £200-£300

**48 - 49**  
Spare Lots

**50** A brass carriage clock, the dial inscribed for Matthew Norman, London, with subsidiary alarm dial, the eight day movement with repeater, chiming on a gong, 17.5cm overall £80-£120

**51** An Arts and Crafts 'Tudric' pewter mantel clock, retailed by Liberty & Co., circa 1900, the circular dial with a blue/green enameled centre, the copper chapter ring with blue enameled Roman numerals, the planished case raised on four squat bun feet, stamped 'Tudric 01294', 21cm wide, 12.5cm high £250-£350

**52** An early 20th century portico clock, with German movement, the dark stained body with brass acorn finial, on squat bun feet, 32.5cm £30-£50



53

**53** A late 19th century oak 'Church Organ' mantel clock. The top modelled as a pipe organ above reeded columns with national flower motifs to base. The double fusee movement striking on a gong and with silvered dial. Engraved silver plaques depicting institutions where the presentee is thought to have played organ, h. 71.5 cm. \*Ivory Act 2018 Registration Reference; HBVK4X78 £600-£800

**54** A late 18th century oak and mahogany longcase clock, the painted arch dial with calendar wheel and with eight day movement, 221cm high £80-£120

**55 - 149**  
Spare Lots





**LOCKE & ENGLAND**

AUCTIONEERS & VALUERS

## Antiques and Collectors' Items

TO BE SOLD BY AUCTION

**Thursday 30th May 2024** Commencing 11am

Viewing: Saturday prior 10.00am – 2.00pm, Tuesday prior 9.00am – 5.00pm

Wednesday prior 9.00am – 7.00pm, morning of sale from 9.00am

*We are now inviting auction entries for our forthcoming sales of Antique Furniture, Pictures, Ceramics & Glass, Silver, Metalware, Boxes and Caddies, Militaria and other collectors' items*

### COMPLIMENTARY VALUATION ADVICE

**Leamington Auction Centre**

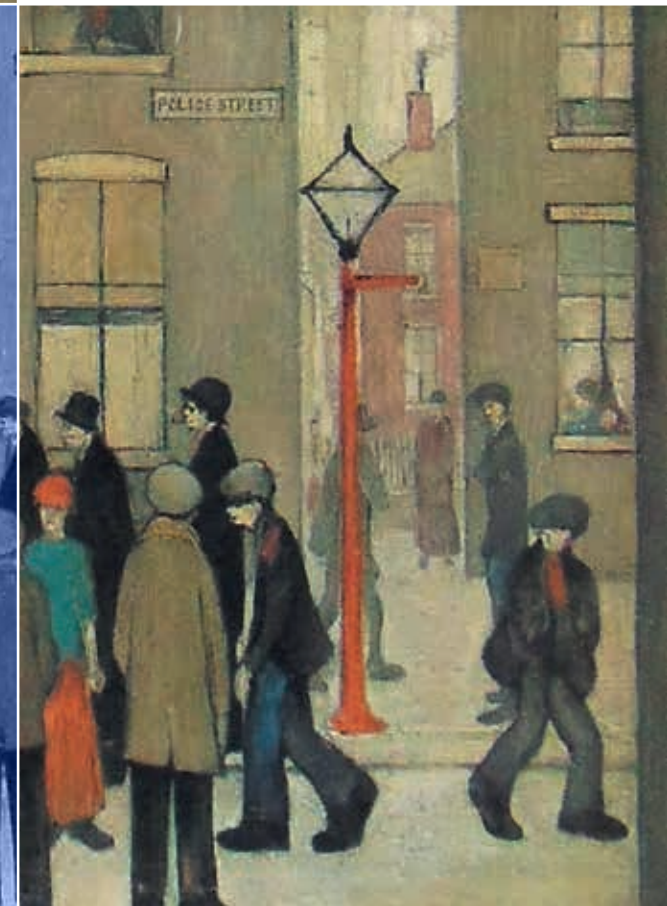
12 Guy St, Leamington Spa, Warwickshire, CV32 4RT

01926 889100 or [info@leauction.co.uk](mailto:info@leauction.co.uk)

[www.leauction.co.uk](http://www.leauction.co.uk)



Pictures & Prints







152



154



153

**150** Laurence Stephen Lowry RBA RA (1887-1976);  
'Outside the Mill',  
limited edition colour print,  
Number 619/850, Adam collection  
blindstamp,  
image 30.5cm x 48.5cm £40 - £60

**151** Laurence Stephen Lowry  
RBA RA (1887-1976),  
'Viaduct',  
limited edition colour print,  
number 618.850, Adam Collection  
blind stamp,  
image 33.5cm x 24cm £30 - £50



**152** Laurence Stephen Lowry RBA RA (1887-1976),  
'The Arrest', limited edition colour print, number 673/850,  
Adam Collection blind stamp,  
image 51.5cm x 42cm £50 - £70

**153** Laurence Stephen Lowry RBA RA (1887-1976),  
'The lake', limited edition colour print, number 261/500,  
image 38cm x 47cm £40 - £60

**154** Alfred Stannard (1806-1889),  
A Norfolk estuary, with figure and boats,  
initialled lower left and dated 1832,  
oil on panel,  
24cm x 32cm £150 - £250



155

**155** Albrecht Durer (German, 1471-1528),  
Christ Crowned with Thorns' & Christ Before Annas',  
woodcuts, 16th century or later, both taken from the  
Small Passion series, the former with watermark,  
image 12.8cm x 10cm £200 - £300

**156** William Hogarth,  
a portfolio of assorted 18th century engravings to include  
ten illustrations for Samuel Butler's Hudibras, A Midnight  
Modern Conversation, Before & After, Harlot's Progress  
plates 1 - 6, the laughing Audience, The Musical group  
and others, various sizes, (25 engravings) £100 - £150



**157** After William Shayer, travellers on a rural track, unsigned, oil on board, 45.5cm x 32cm £100 - £150

**158** George Swinford Wood RCA (1861-1906), 'A Westmorland Byway' signed, oil on canvas, inscribed verso and dated 1882, 51cm x 71cm £200 - £300

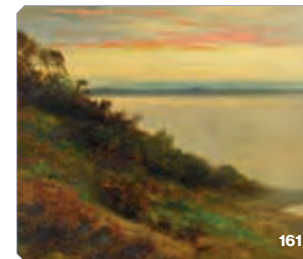


**159** English school, late 19th/early 20th century, gentlemen on horseback in a landscaped ground, indistinctly signed, oil on panel 29cm x 39cm £100 - £150



**160** English school, 20th century, Tynemouth Priory & Coastguards', oil on board, 25cm x 34.5cm £30 - £50

**161** Daniel Sherrin (1868 - 1940), a pair of coastal views with atmospheric skies, signed, oil on panel, 25cm x 30.5cm £200 - £300







**162** Mackenzie Thorpe (B.1956) 'Owen & Chloe', signed, titled and numbered in pencil in the margins, limited edition colour lithograph no: 327/395, image 56cm x 44cm £60 - £100

**163** Herman Moll, Persia The Caspian Sea, hand coloured engraving, 1732, plate 24.5cm x 26cm £80 - £120

**164** A collection of framed 18th century and later hand coloured cartography, Emanuel Bowen, The Road from Buckingham to London, c1764, 189.5cm x 12cm; Robert Morden, Darbyshire (sic), 36cm x 42cm; Thomas Moule map of Derbyshire, c1840, 26cm x 20.5cm; J Cary, maps of Durham & Yorkshire, c1787, 22.5cm x 28cm and a map of Warwickshire £80 - £120

**165** Oliver Clare (1853 - 1927), still life, plums, gooseberry and strawberries, signed, oil on board, 25cm x 18cm £100 - £150

**166 - 199**  
Spare Lots



Works of Art





201

**200** A mid 20th century Bohemia cranberry and white overlay glass six branch chandelier with a pair of twin branch wall lights, sparsely painted with floral sprigs throughout £100 - £150

**201** A Charlotte Rhead tube lined charger, pattern No.4926, for Crown Ducal, printed and inscribed marks, 32.3cm diameter £30 - £50

**202** A group of 19th century salt glazed jugs, comprising Ridgway & Abington 'Nineveh' & 'Westminster' patterns, 21cm & 18.3cm; Minton 'Drunken Silenus', 17.5cm; Dudson 'Argyle' pattern, 24cm; and an Ashworth jug with pewter hinged lid, 25cm £50 - £70

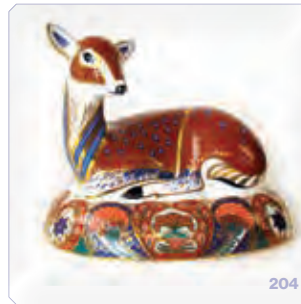


203



206

**203** Two Royal Crown Derby Imari paperweights, modelled as a seated Camel and a LLama, each with a gold button and red printed marks, the LLama produced exclusively for the collectors guild, 17cm & 12.7cm high £100 - £150



204

**204** A Royal Crown Derby Imari paperweight modelled as a Roe deer, designed exclusively for the Collectors Guild, with gold coloured stopper and red printed marks, 16cm wide £50 - £80

**205** Two Royal Crown Derby Imari paperweights, modelled as an Armadillo and a Dolphin, each with gold coloured stopper, 12cm & 16cm wide; and a Royal Crown Derby Imari trinket box pattern 1128, 9cm wide £0 - £0

**206** A Royal Crown Derby paperweight, modelled as a caparisoned elephant with howdah, with gold stopper and red printed marks, 21cm high £200 - £300

**207** Roma Babuniak (contemporary), a studio pottery bowl, thinly potted, decorated with folds and two pale pink painted bands, incised signature and dated 89, 17.5cm at widest point £100 - £150



210

**208** A set of seven early 19th century Derby type porcelain plates, decorated in the style of William Billingsley, hand painted with floral bouquets surrounded by flowers, unmarked but with inscribed number 13 in yellow to one foot rim, 25.5cm diameter £60 - £80

**209** An early 20th century Bisto ware child's pottery six place dinner set, with colour printed 'Me & Catherine Susan' puppet decoration, together with an associated book £20 - £30



211

**210** A Doulton Lambeth stoneware vase, designed by Eliza Simmons, with incised flowers within a scrolling beaded border on a dark blue and brown ground, incised factory and artist marks, 27cm £100 - £150

**211** A Moorcroft flambe 'Columbine' pattern vase, on a shaded red ground leading to a blue circular foot, inscribed blue initials and impressed marks, 18cm £120 - £180

**212** Three 19th century Staffordshire greyhounds, each modelled with a dead hare in their jaws, standing on naturalistic bases with trunk support, 19.5cm - 29cm £40 - £60



300



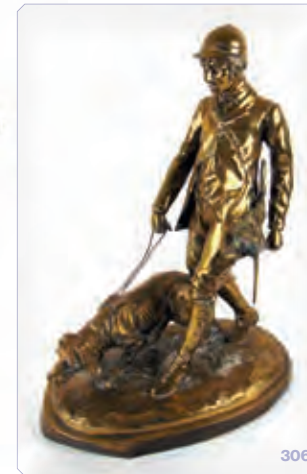
304



302



308



306

**300** A solid brass Port Hole of HMS Ark Royal (1955-1978), stamped John Roby Ltd, Rainhill, the hinge stamped M12, 44 & M4 1355.5cm diameter, together with a H.M.S. Ark Royal embossed replica plaque with Sailors Ark Royal cap ribbon £200 - £300

**301** A boxed Dinky Toys Gift Set No.2 Commercial Vehicles, comprising five vehicles, with insert and original box, a Dinky 430 Breakdown Lorry (with windows) and a Dinky 195 Jaguar 3.4 Saloon, in original boxes, £200 - £300

**302** Hornby O gauge, five boxed sets comprising, M1 Passenger set, M1 Goods set and three M0 Goods sets, £100 - £150

**303** A Cooke V22 Mine surveyors theodolite by Vickers Instruments Ltd, in fitted wood box; a Cooke Troughton & Simms Ltd Mine surveyors level, and a Mine surveyors brass level, stamped 43414 W.F.S B2118 and with military broad arrow in wood box with corresponding stamps £40 - £60

**304** A pair of French Art Deco spelter bookends, modelled as seated females dressed in open flowing robes, on marble bases, 20cm wide, 15.5cm & 16cm high £80 - £120

**305** Three copper pot bellied alcohol stills, each with planished decoration, with either brass or copper handles, 60cm - 63cm high £100 - £150

**306** After Pierre - Jules Mene (French, 1810 - 1878), a cast polished bronze figure of a huntsman with hound, 61cm £50 - £80

**307** Two 19th century copper and brass samovars, each with scroll handles and on square bases, 48cm & 52cm high £60 - £80

**308** Two large copper pot bellied alcohol stills, each with planished decoration, with either brass or iron handles, 90cm & 92cm £100 - £150





**309** A pair of Japanese cloisonné vases, late Meiji/early Taisho, decorated with geese within naturalistic surroundings against a deep blue ground, 25cm, with turned wood stands £180 - £220



**310** A Chinese carnelian figure of Guan Yin, 20th century, in seated pose holding a branch of blossoming prunus, on a pierced wood stand, 13.5cm overall; together with two carved jade chopstick rests, modelled as miniature dogs, 3.5cm wide £100 - £150

**311** Two British Red Cross Society proficiency in Nursing medals, awarded to Dorothy McPhail (nee Gardner), together with a voucher dated 1940 and an application for war service bar for service between May 23rd 1915 - June 1st 1918 £20 - £40

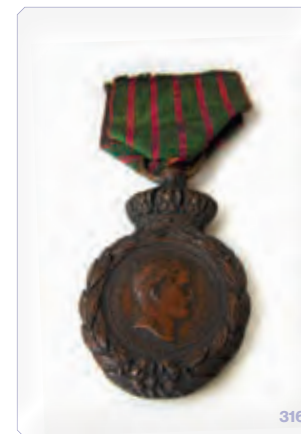


**312** A Lundy Puffin & half Puffin, 1929, each with traces of lustre, together with a small collection of coins and medallions, to include a silver Peace dollar, 1923 S, a Victorian bronze diamond jubilee commemorative medal, King George & Queen Mary white metal medal and others £40 - £60

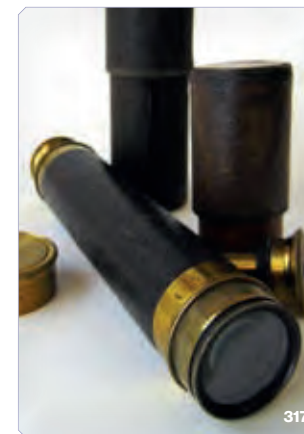
**313** A late Victorian music box, in stained wood case, the brass handle with a white glass knob, playing a tune similar to the Swedish Rhapsody, 10cm x 7.3cm £20 - £30



**315** A small collection of German first world war military awards, comprising an original early 20th century Prussian State Warriors Association badge with coat of arms to front with two inscribed ribbons, with embossed 'Bonner, Fahnenfabrik, Bonn' metal label to the reverse, a German Kyffhauser Medal 1914-18 with ribbon, an 1914 Iron Cross 2nd Class, a 1914 - 18 Honour Cross, and an alloy Medal for loyal services in the field of the Field Air Commando Belgium / Northern France, £80 - £120



**316** A medal of Sainte Helene, issued by Napoleon I 1821, with presentation certificate awarded to Juriant? Jean a Borghetto, No.5996, £80 - £120



**314** An 18th century stepped knitting sheath, possibly Teesdale, with incised initials MD & AL dated 1783, with further partially erased initials and chip carved decoration; a square form Durham type knitting sheath initialled twice A.N, A.N, with incised foliate decoration, with later attached label inscribed 'Ann Nicholson married Thomas Calvert (blacksmith), both of Gainford in 1855'; a mid 19th century West Yorkshire type turned knitting sheath, with later attached label inscribed 'Possibly given by John Kipling to Ann Spencer on his return from Leeds (married in 1842)', and two animal bone scoops with incised marks, 11cm - 23.5cm £100 - £150

**317** A small brass and leather bound three drawer pocket telescope, with lacquered brass end cap and a spare lens, in protective cardboard tubes, 43cm fully extended, 16cm closed £40 - £60





318



320



325

**318** Alexei (Aleksey) Arkhipov (Russian, b.1955), a study of female hands, patinated bronze, struck to the underside in cyrillic, 14cm & 16.3cm £100 - £150

**319** A Scotcher & Son music box, in walnut case, label to underside, a Victorian rosewood veneered tea caddy and a Victorian brass mounted desk stand £30 - £50



**323** A pair of Chinese bronze Dogs of Fo with pups, early 20th century, a playful pup either under a paw or scampering up the side, 40cm £300 - £500

**321** An early 20th century brass coach/carriage lamp, with red, blue and clear domed glass lenses, 25cm £30 - £50

**324** Seven loose pages of the Quran, probably 19th century, each ink inscribed, three with decorations within the margins, smallest page 13cm x 10.3cm, largest 21cm x 12.5cm £100 - £150

**322** World postage stamps, unused and used, to include a large quantity of George V India postage stamps, many European stamps of the first half of the 20th century addressed to Poona in India, all loose in envelopes £100 - £150



323

**325** Taxidermy - a late 19th/early 20th century stuffed and mounted ten point stag on shield shape plaque, 59cm at widest point, approximately 115cm high overall £100 - £150

**326** A life size lead Heron garden ornament, modelled facing downwards, on a concrete base, 88cm wide, 72cm high £100 - £150

**327** Two first world war medals, awarded to 242268 Pte, W H Field, R WAR R, with ribbons; two WWII defence medals and a victory medal £40 - £60

**328** English renaissance style 15 string lute, with ink inscribed makers label for Ian Harwood and John Isaacs no. 90, 1967 in hard case together with two lute beginners books and spare strings £150 - £250

**329** An early 20th century Khorjin saddle bag with red and blue ground decoration. 120cm x 85cm £60 - £80

**330-400**  
Spare Lots

# Don't miss a bid!

Sign up for our  
free email Lot Alerts  
[www.leauktion.co.uk](http://www.leauktion.co.uk)



Sign up for Lot Alerts

Your primary interest...

Keywords:  All words any order

Name that of alert

Submit

Sign up for Lot Alerts

☒ Your primary interest...

- > Vehicles
- > Bedford Weekly Auctions
- > Commercial Auctions
- > Leamington Spa Weekly Auctions
- > Specialist Auctions
- > Sporting Goods Auctions
- > St Neots Weekly Auctions

Sign up for Lot Alerts

Your primary interest...

> Bedford Weekly Auctions

Keywords:  All words any order

Name that of alert

Submit



Silver & Plate





403

**401** A silver plated egg cruet stand with condiment pots and a set of four George III silver teaspoons, 1803, each with monogrammed terminal  
£30 - £40

**402** A Walker & hall silver plated five piece tea set, all but the tray engraved with monogram; and a pair of silver plated wine bottle coasters, the tray 57cm diameter excluding handles  
£40 - £60

**403** A late Victorian silver mounted liqueur set, the decanter with wythen body, the plain glasses with star cut base, with silver mounts for William Comyns, London 1895 and Birmingham 1896, in fitted plush lined presentation case marked for West & Son, 18 & 19 College Green, Dublin, decanter 20.5cm, glasses 5.2cm  
£150 - £250

**404** A set of six silver & enamel seal top teaspoons, Henry Clifford Davis, Birmingham 1959, each bowl decorated with floral spray to the reverse; a George III silver cake slice, possibly Abstinando King, London 1800, with later handle; a pair of William IV silver sugar tongs, Charles Boyton, London 1835, assayed silver bowl, egg cup & christening spoon; an Italian silver spoon with scallop shape bowl; a white metal tea strainer and a silver plated salver  
£100 - £150



405



408

**406** A pair of silver scallop shaped dishes, Horace Woodward & Co Ltd, London 1897, on three ball feet, 14cm, 157.8g  
£60 - £80

**407** A four piece silver cruet set, makers mark erased, Birmingham 1899, with c scroll decoration on 4 paw feet; and two assayed silver mustard pots with blue glass liners and matched silver spoons, 305g  
£50 - £80

**408** An Irish silver dish ring, Edmond Johnson, Dublin 1902, of circular waisted form, a vacant cartouche opposed by a stag & doe with wolves, amongst foliate scrolls, with a later cranberry glass liner, 20.5cm diameter, 451g  
£400 - £600

**409** A silver backed four piece dressing table set, S Blanckensee & Son, Birmingham 1929, with vacant rounded within engine turned decoration (4)  
£30 - £50

**405** A pair of silver sauce boats, Daniel & John Wellby, London 1896 & 1899, with scroll handle on stepped oval bases, 16cm, 432g  
£150 - £250





411



412



413

**410** A George V silver salver with beaded rim and ball and claw feet. Hallmarked for Sheffield 1931, makers mark for James Dixon & Sons, also with import hallmark. Approx. weight 1080g £400 - £600



415

**411** A George V silver three-piece tea set of bulbous form. Hallmarked for Sheffield 1931, makers mark for James Dixon & Sons, also with import hallmark. Approx. weight 846g £300 - £500

**412** A George V silver hot water jug of baluster form. Hallmarked for Sheffield 1932, makers mark for James Dixon & Sons, also with import hallmark. Approx. weight 559g £200 - £300

**413** A George III Irish silver sugar bowl together with a George III Irish silver cream jug. Various hallmarks. Approx. weight 445g £180 - £250



414

**414** A pair of Elizabeth II silver pierced bottle coasters with turned wooden bases. Hallmarked for Birmingham 1989, makers mark for Roberts & Dore. Dia. 13 cm £100 - £200

**415** A George V matched silver four-piece tea and coffee set. Various hallmarks, makers mark for S Blanckensee & Son. Approx. weight 1578g £600 - £800



421

**416** A George VI silver engine turned dressing table set together with a set of similar silver clothes brushes. Various hallmarks. £70 - £100

**417** An Elizabeth II silver presentation salver with piecrust rim. Hallmarked for Birmingham 1990, makers mark for Crescent silver. Approx. weight 159g £60 - £80

**418** A George VI silver quach together with three silver pin dishes/ ashtrays. Various hallmarks. Approx. weight 369g £170 - £200

**419** Four small silver trophies. Various hallmarks. Approx. weight 142g £50 - £80

**420** Two Georgian silver serving spoons together with a pair of silver sugar tongs. Various hallmarks. Approx. weight 183g £80 - £120

**421** A George V silver christening mug together with a set of white metal souvenir spoons. Approx. weight 147g £70 - £100



426

**422** A white metal fish server together with a set of similar white metal forks marked '830s'. Approx. weight 529g £180 - £250

**423** A Dutch white metal spoon with embossed scenes of dancing. Approx. weight 29g, l. 14 cm. £30 - £50

**424** A collection of items to include a WMF silver plated knife rest, a silver pickle fork, silver compact and a small silver pill box with printed portrait to lid. £40 - £60



427

**425** A silver plate, leather and glass hip flask together with two white metal funnels and a pair of silver sugar tongs £30 - £50

**426** A George V silver salver with piecrust rim and central monogram. Hallmarked for Sheffield 1918, makers mark for Joseph Rodgers & Sons. Approx. weight 1104g £400 - £600

**427** A George VI silver Arts & Crafts style four-piece tea and coffee set, the pieces having a textured finish above pierced bases. Hallmarked for Sheffield 1936, makers mark for Thomas Bradbury & Sons. Approx. weight 1356g £600 - £800

**428** An Elizabeth II silver coffee pot together with a matching silver teapot. Hallmarked for London 1969, makers mark for George Tarratt Ltd. Approx. weight 1379g £500 - £800



428





456

**450** An Elizabeth II proof half sovereign dated 1985, together with box and certificate. £150 - £200

**451** An Elizabeth II proof full sovereign dated 1980, together with box. £300 - £350

**452** An Elizabeth II proof 1/2oz Britannia dated 1987, together with box and certificate. £600 - £800

**453** A 2023 Royal Mint Petition Crown 2oz Silver Proof Two-Coin Set. £200 - £300

**454** A 2022 Royal Mint Queen Elizabeth II 1926-2022 5oz Silver Proof Coin £100 - £200

**455** A 2024 Royal Mint The Sovereign Four-Coin Gold Proof Set. The set containing double, full, half and quarter proof sovereign coins. £1200 - £1500

**456** A Harrington & Byrne Queen Victoria Sovereign Collection containing four full sovereigns dated 1855, 1876, 1899 & 1898. £1200 - £1500



457

**457** A Harrington & Byrne William & Mary and William III Silver Half Crown Pair. The coins dated 1689 & 1697 respectively £100 - £200

**458** A 2022 Royal Mint Queen Elizabeth II 1926-2022 50p Silver Proof Coin £30 - £50

**459** A Jubilee Mint Ascension Island 2024 80th Anniversary of D-Day Gold Proof Sovereign £300 - £350

**460**  
Spare Lot

**461** A cased set of three limited edition sterling silver medals commemorating 300 years of The Royal Observatory at the National Maritime Museum, struck by the Royal Mint, maker JRC, London 1975; two royal commemorative silver proof crowns, a large sterling silver medallion commemorating the Historic vehicle Silver Jubilee Ascot 1977 and two German silver coins commemorating the 200th Anniversary of the birth of Carl Friedrich Gauss (8) £100 - £150



462

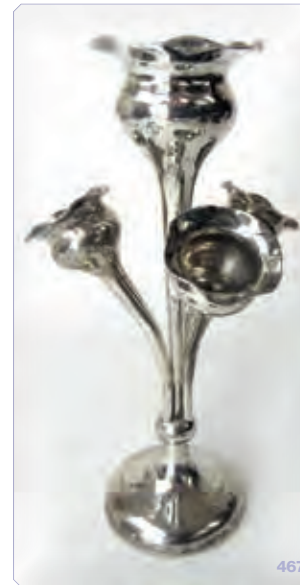


464

**462** A silver navette shape basket, Hendeles & Co, London 1913, with pierced decoration and embossed lion mask and bellflower swags, 24cm diameter, 180g £120 - £150

**463** A silver double ended sauce boat and stand, Barker Bros, Chester 1908, the handles with beadwork and foliate scroll terminals; and two assayed sterling silver cream jugs, 315g £120 - £150

**464** A set of four Victorian silver salts, Robert Harper, London 1873, with beaded rim, a vacant cartouche and embossed foliate decoration, on three feet, with blue glass liners; together with a set of four silver plated salts, 206g £100 - £150



465

**465** A matched silver cruet set with spoons, Albert Ernest Jones, Birmingham 1966 & 1972; a pair of silver sugar tongs with eagle claw grips, Thomas Kanzow Bowley, London 1901; a silver christening cup and a silver salt, 438g £140 - £180

**466** A Victorian silver seven bottle cruet stand, John Evans II, London 1846, with gadrooned rim on C scroll feet (one bottle missing) £120 - £150

**467** An Edwardian silver four flute epergne, Trevitt & Sons, Chester 1907, on weight base, 22cm £100 - £150



470



468

**468** A set of four and a pair of early 19th century assayed silver teaspoons, each with initialed terminal, and an Edwardian silver sifter, Barker Bros, Birmingham 1904, with pierced and gilt scalloped bowl and shell terminal, 153g £50 - £80

**469** A George III silver fiddle pattern stilton scoop, William Knight II London 1816; and a silver condiment spoon, William Hutton & Sons Ltd, London 1912, and a pair of silver plated cake tongs with sterling silver handles, 105g weighable silver £50 - £70

**470** Nine sterling silver napkin rings, various dates & makers, 289g £100 - £150

**471** A collection of predominantly 19th century silver flatware, comprising of a pair and four sauce ladles, a pair of sugar tongs, sifter spoon, tea strainer and others, various dates and makers, 430g £150 - £180

**472** Four sterling silver vesta cases, a silver cigar lighter, a silver funnel and a small silver goblet, various dates and makers, 153g £60 - £80

**473** A set of six Victorian silver teaspoons, George Adams, London 1875, with initialed terminals; three Victorian silver teaspoons and a Georgian silver teaspoon, 258g £70 - £100

**474** A Scottish silver arts and crafts teaspoon, William McGregor Michael, Glasgow 1958, with thistle terminal and variegated stem above a planished bowl, 13.5cm; four silver napkin rings and two silver trophies, various dates and makers, 154g £60 - £80



473

**478** A small planished silver dish, A E Jones, Birmingham 1968, 10cm diameter; a silver goblet, Wakely & Wheeler, London 1966, 9.3cm high, a silver ladle, George Percy, London 1820 and a seal top spoon, C J Vander, London 1974, 281g £100 - £150

**479** A collection of sterling silver, comprising part cruet sets, a 19th century butter knife, sugar tongs, silver topped dressing table pots, child's food pusher set etc, various dates and makers, 337g weighable silver £100 - £150

**480** A sterling silver salver, Barker Bros Silver Ltd, Birmingham 1937, with beaded rim, on four claw & ball feet, 24.5cm diameter, 633g £200 - £300

**481** A Georgian style silver plated tea caddy, A & J Zimmerman Ltd, and a silver plated four piece tea set, John Rodgers & Son Ltd £40 - £60

**481-499**  
Spare Lots



475

**475** A silver cigarette case, Inman Manufacturing Co, Birmingham 1941, with engine turned decoration and gilt interior, 171g £50 - £70



476

**476** A silver bowl and cover, George Tarratt Ltd, London 1969, 10cm diameter, 246g £80 - £120

**477** Two sterling silver armada type dishes, Wakely & Wheeler, London 1969 & 1973, 9.5cm & 15cm diameter, 276g £80 - £120



**www.leauction.co.uk**

[REQUEST A VALUATION](#)

The screenshot shows the Google Images search results for the query "cat". At the top, there is a search bar with "cat" entered. Below the search bar, there are tabs for "All Images", "GIF Images", and "Videos". The "All Images" tab is selected. The search results are displayed in a grid of image thumbnails. The first row shows several cat images. The second row shows more cat images. The third row shows more cat images. The fourth row shows more cat images. The fifth row shows more cat images. The sixth row shows more cat images. The seventh row shows more cat images. The eighth row shows more cat images. The ninth row shows more cat images. The tenth row shows more cat images. The eleventh row shows more cat images. The twelfth row shows more cat images. The thirteenth row shows more cat images. The fourteenth row shows more cat images. The fifteenth row shows more cat images. The sixteenth row shows more cat images. The seventeenth row shows more cat images. The eighteenth row shows more cat images. The nineteenth row shows more cat images. The twentieth row shows more cat images. At the bottom of the page, there is a "Tools" section with a dropdown menu set to "All" and a "Refine" button. Below the "Tools" section, there is a "More from Google" section with links to "Gmail", "Maps", "YouTube", "News", "Shopping", "Flights", "Books", "Images", "Web", "Videos", "Gmail", "Maps", "YouTube", "News", "Shopping", "Flights", "Books", "Images", "Web", "Videos".

## Request an Online Valuation!





**LOCKE & ENGLAND**  
AUCTIONEERS & VALUERS

# Jewellery, Coins & Watches

TO BE SOLD BY AUCTION

Thursday 25th July 2024 Commencing after 1pm

Viewing: Saturday prior 10.00am – 2.00pm, Tuesday prior 9.00am – 5.00pm

Wednesday prior 9.00am – 7.00pm, morning of sale from 9.00am

*We are now inviting auction entries for our forthcoming sales to include a range of antique & modern watches, rings, sovereigns, bracelets, brooches, pendants and necklaces, etc*

## COMPLIMENTARY VALUATION ADVICE

### Leamington Auction Centre

12 Guy St, Leamington Spa, Warwickshire, CV32 4RT  
01926 889100 or [info@leauction.co.uk](mailto:info@leauction.co.uk)

[www.leauction.co.uk](http://www.leauction.co.uk)



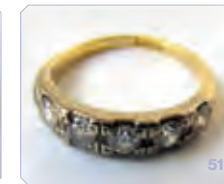
**500** An 18ct gold sapphire and diamond cluster ring with channel set shoulders. Size N 1/2. Approx. weight 3.6g. £120 - £180



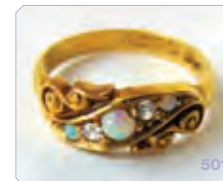
**503** A mid Victorian 15ct gold, almandine garnet and pearl ring with openwork scrolling shoulders and lozenge engraved shank. Size L 1/2. Approx. weight 1.6g. With box £150 - £200



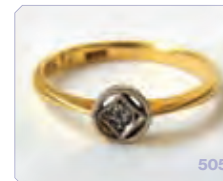
**506** An early 20th century 18ct gold, diamond and sapphire ring. Size L. Approx. weight 3.2g. A/F £80 - £120



**510** An early 20th century 18ct gold and ruby ring. Size K 1/2. Approx. weight 2.5g. £70 - £100



**501** A late Victorian 18ct gold, opal and diamond ring the five stones in a scrollwork setting. Size M. Approx. weight 3.4g. £100 - £150

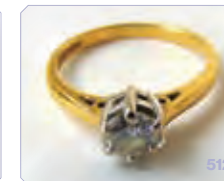


**502** An early 20th century yellow metal and diamond trilogy ring marked '18ct'. The three old cut stones totalling approximately 0.25ct. Size M 1/2. Approx. weight 2.1g. With box. £80 - £120



**507** An 18ct gold, diamond and emerald cluster ring. Size N 1/2. Approx. weight 2.4g. £60 - £80

**508** A 9ct gold, heart shaped sapphire and diamond cluster ring. Size N 1/2. Approx. weight 2g. A/F £30 - £50



**511** An 18ct gold and diamond half eternity ring. The five round brilliant stones totalling approximately 0.5ct. Size J. Approx. weight 3.5g. £200 - £300

**512** An 18ct gold diamond solitaire ring, the round brilliant stone approximately 0.45ct. Size H 1/2. Approx. weight 2.2g. £200 - £300

Jewellery, Coins & Watches

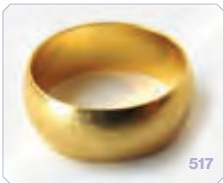
*All estimates exclude buyer's premium of 21% including VAT which is payable in addition*

51





**513** A white metal engraved band marked 'Plat'. Size M. Approx. weight 3.6g. £50 - £80



**519** Two yellow metal signet rings, one marked '9ct'. Approx. weight 8.1g. £110 - £140



**524** A 9ct gold synthetic emerald dress ring together with a 9ct gold CZ dress ring. Approx. weight 4.1g. £50 - £80



**529** An 18ct gold and diamond ring, the five round brilliant stones totalling approximately 0.5ct. Size J. Approx. weight 3.7g. £200 - £300

**514** A 19th century yellow metal ring set with seven old cut amethysts. Size N. Approx. weight 1.9g A/F. £80 - £120

**520** A 22ct gold wedding band together with five 9ct gold examples. Approx. weights 1.9g & 9.6g A/F. £200 - £300

**515** A 22ct gold wedding band. Size Q. Approx. weight 5.9g. £200 - £300

**521** A Victorian 18ct gold and three stone diamond gypsy ring, the approximately 0.25ct central old cut stone flanked by two smaller. Size N. Approx. weight 6.3g. £250 - £350

**516** Four 22ct gold wedding bands. Approx. weight 13.5g. £450 - £600

**522** A 9ct gold opal and CZ dress ring together with one similar opal ring. Approx. weight 2.8g. £40 - £60

**517** A 22ct gold 'D' shaped wedding band. Size R/S. Approx. weight 9.1g. £300 - £400

**523** A 9ct gold and smokey quartz dress ring together with a 9ct gold Claddagh ring. Approx. weight 5.3g. £70 - £100

**518** A 22ct gold wedding band with twist design. Size M. Approx. weight 5.6g. £200 - £300

**527** Four 9ct gold and yellow metal rings to include a signet ring. Approx. weight 5.1g. £70 - £100

**528** A 9ct gold signet ring together with a 9ct gold and spinel eternity ring. Approx. weight 5.6g. £80 - £120



**533** A 1982 half sovereign mounted in a 9ct gold surround with chain. Approx. weight 9g. £200 - £250



**539** A Georgian yellow metal and almandine garnet buckle brooch together with one similar brooch. Approx. weight 4.1g. £70 - £100



**531** An early 20th century diamond and sapphire bar brooch. Total diamond weight estimated in excess of 1.8ct. Approx. weight 8.7g, l. 7.5 cm. £600 - £800

**532** A pair of yellow metal and diamond solitaire stud earrings, the two round brilliant stones totalling approximately 1.5ct. £1200 - £1500

**534** An Edwardian yellow metal, amethyst and seed pearl pendant marked '9ct'. Together with a pair of similar earrings. Approx. weight 5g. £100 - £150

**535** An early 20th century amethyst and seed pearl brooch of openwork design together with yellow metal and topaz brooch. Approx. weight 6.6g. £80 - £120



**538** A string of cultured pearls having a 9ct white gold clasp set with a diamond chip, l. 54 cm. £70 - £100



**536** A 9ct gold and amethyst pendant on chain. Approx. weight 3.7g. £50 - £80

**537** An early 20th century yellow metal mounted cameo brooch marked '9ct'. Approx. weight 10.7g. A/F. £50 - £80



540



545



546



548

**540** A pair of Victorian yellow metal inlaid pique earrings, 1.3 cm (excluding hooks) £100 - £150

**541** A pair of early 20th century, yellow metal and garnet drop earrings together with a pair of yellow metal and pearl earrings. A/F £70 - £100

**542** A pair of Victorian yellow metal, coral and seed pearl drop earrings marked '9ct' to fittings together with one other pair of coral drop earrings marked 'R.G' to fittings. A/F £100 - £200

**543** A Victorian 15ct gold, garnet and diamond brooch together with three similar 9ct gold brooches. Approx. weights 3.6g & 6.8g £150 - £200

**544** A collection of four yellow metal stick pins to include one in the form of a leaf, wish bone etc. Approx. weight 3.2g With box. £50 - £80

**545** An early 20th century yellow and white metal brooch in the form of a fox and riding crop. Approx. weight 6.1g With box. £100 - £150

**546** A yellow metal RAF officers sweetheart brooch marked '15ct'. Approx. weight 5.9g £140 - £180

**547** A yellow metal and enamel RAF sweetheart brooch marked '9ct' together with a 9ct gold dog brooch with diamond set eye. Approx. weight 9g £140 - £180

**548** A yellow metal bar brooch with greyhound relief, marked '9ct'. Approx. weight 6.5g £100 - £150



553



557

**549** An early 20th century 9ct rose gold bangle. Approx. weight 10.5g £150 - £200

**550** A yellow metal and seed pearl splay brooch marked '9ct' together with one similar 9ct gold example. Approx. weight 4.6g £60 - £80

**551** An early 20th century yellow metal and jade necklace marked '9ct'. The five stones divided by wavy links. Approx. weight 8.9g. L. 38 cm £100 - £200

**552** A yellow metal, pearl and topaz flower brooch together with a small locket marked '9ct'. Approx. weight 7.8g £100 - £150



558

**553** A pair of 9ct gold cufflinks with engine turned decoration. Approx. weight 9g £130 - £180

**554** An 18ct gold wedding band together with a pair of 18ct gold hoop earrings. Approx. weight 3.7g A/F £100 - £150

**555** A yellow and white metal bracelet together with a bangle marked '9ct gold bronze core'. Weight of the bracelet approx. 9.4g £140 - £180

**556** An assortment of 9ct gold and yellow metal earrings. Approx. weight 4.9g £60 - £80

**557** A Victorian yellow metal Albertina chain with tassel fob. Marked '9c' to clip and with non matching t-bar. Approx. weight 18.3g £250 - £350

**558** A 9ct gold charm bracelet suspending a variety of 9ct gold, yellow metal and base metal charms. Approx. weight 72.9g £1000 - £1200





**559** A South Africa 1980 1/10 oz Krugerrand in a 9ct gold pendant mounted suspended from a 9ct gold chain. Approx. weight 13.6g £250 - £350

**560** An Edwardian yellow metal and amethyst pendant marked '9ct' together with two 9ct gold chains. Approx. weight 9.5g £150 - £200

**561** A Victorian yellow metal Albertina chain with sliding section and tassel fob. Approx. weight 21.6g £300 - £400

**562** An assortment of 9ct gold, yellow metal and silver jewellery to include a 9ct gold cased watch, chains, locket, heart pendant etc. £100 - £150

**563** An early 20th century leather jewellery travel case with contents to include yellow metal locket, 9ct gold dress studs, watch, rings etc. £150 - £200

**564** Two 9ct gold gate link bracelets. Approx. weight 8.8g. £120 - £180

**565** A 9ct gold curb link neck chain. Approx. weight 21.8g £300 - £400

**566** Victorian silver rupee broochage, young gothic head, £70 - £100

**567** A small collection of mixed coins, William IV and later, principally rupees, to include a East India Co William IV rupee and quarter rupee 1835, Victorian Bikanir State, East India Co rupees and half rupee, Tibet Guangxu silver rupee, Burmese Kyat, a temple token and others £50 - £80

**568** A vintage Rado gentleman's wristwatch, the dial with outer minute ring and illuminated hands, waterproof and antimagnetic, in a stainless steel case with a leather strap £40 - £60

**569** A set of 9ct white gold and mother of pearl cufflinks, dress buttons and collar studs, makers initials A&W, in fitted Asprey of London presentation box £200 - £300

**570** A 9ct gold four bar gate link bracelet. Approx. weight 5.7g A/F £80 - £120



**571** A 9ct gold herringbone link bracelet. Approx. weight 8.8g £130 - £180

**572** A 9ct gold curb link bracelet. Approx. weight 23.7g £250 - £450

**573** An assortment of 9ct gold and yellow metal jewellery to include chains, earrings, brooch etc. Approx. weight 33.9g £450 - £600

**574** A 9ct gold curb link chain. Approx. weight 9.2g £130 - £180

**575** A yellow metal ring mount marked '18ct' together with a 9ct gold, diamond and sapphire cluster ring and a small 9ct signet ring. Approx. weights 1.9g & 3.4g £100 - £150

**576** A collection of 9ct gold and yellow metal jewellery to include signet rings, amethyst earrings, pendants etc. Approx. weight 8.9g A/F £100 - £150



**577** A rolled gold bangle marked '9ct metal' together with a yellow metal portrait pendant marked '9ct' and a bar brooch marked '15ct' £80 - £120

**578** A 9ct gold propelling toothpick, the exterior with engine turned decoration. Approx. weight 3g £50 - £80

**579** Two 9ct gold curb link chains. Approx. weight 43.1g £650 - £800

**580** A yellow metal and diamond trilogy ring marked '18ct & Plat' together with an 18ct gold wedding band and three 9ct gold dress rings. Approx. weights 4.8g & 7.5g £220 - £280

**581** A gilded 1890 double florin mounted as a brooch together with a similarly mounted 1896 South Africa two shilling coin. £30 - £50

**582** A 1960s Georg Jensen silver and tigers eye ring. Marked '90B'. UK size P. With box. £150 - £250



585

**583** A gentleman's Omega De Ville quartz wristwatch together with one other rectangular cased Omega De Ville mechanical wristwatch. £150 - £200

**584** A Smiths De Luxe mechanical wristwatch on trench style strap. £40 - £60



586

**585** A gentleman's Omega Automatic Constellation Calendar wristwatch, the stainless steel case with signed crown. On a later expanding strap. £300 - £400

**586** A mid-20th century ladies white metal and diamond set cocktail watch on a white metal mesh bracelet marked '9ct'. Approx. weight 17.6g £150 - £250



588



587

**587** A late 19th/early 20th century yellow metal fob watch marked '18K', the enamelled dial with red and gold detailing. Approx. weight 38.3g £200 - £300

**588** A George III white metal cased verge fusee pocket watch, the dial signed 'Delaponte London'. A/F £60 - £80



**589** A gentleman's 18ct gold Omega Constellation Automatic Chronometer wristwatch. The gold coloured dial with date aperture housed in a rectangular gold case with signed crown and matching strap marked '750' to clasp. Circa 1970s. Together with an Omega service receipt dated 16.01.2024 and a service box. £4000 - £6000

**590** A silver curb identity bracelet, Adie Bros, Birmingham 1961, and two silver ingot pendants, SoS, Sheffield 1977, 141g £50 - £80



# HAMMER PRICES - JANUARY 2024

1	320	41	18	116	90	231	120	404	230
2	30	41	60	117	70	232	70	405	300
3	75	42	110	118	170	233	95	406	170
4	180	43	80	119	35	234	60	407	130
6	300	44	160	120	1000	235	30	408	640
7	35	45	70	200	160	236	100	409	30
10	320	45	45	201	100	237	130	410	85
11	55	47	60	202	50	238	40	411	260
13	260	48	120	204	550	239	70	412	240
15	320	50	1300	205	130	240	170	413	150
16	340	51	130	206	95	241	130	414	100
17	40	52	420	207	120	242	50	415	60
18	280	53	150	208	140	243	80	416	95
19	45	53	26	209	140	244	40	418	75
20	130	54	90	210	240	245	20	419	45
22	50	55	95	211	240	246	75	420	70
23	65	71	170	212	130	247	55	421	90
24	320	72	550	213	65	248	85	422	55
25	50	73	65	214	130	249	60	423	130
26	130	74	100	215	65	250	90	424	75
27	300	75	85	216	110	251	80	425	180
28	220	76	90	218	85	252	55	426	160
29	320	100	190	219	130	253	50	427	190
30	180	101	130	220	130	254	200	428	340
31	280	105	20	221	95	394	95	429	190
31	20	106	130	222	95	395	100	430	550
32	700	108	40	223	65	396	230	431	100
33	45	110	22	224	150	397	70	432	720
34	75	111	85	225	150	398	140		
35	30	112	20	226	55	399	70		
36	65	114	35	227	300	400	320		
37	90	114	100	228	160	401	180		
38	200	115	10	229	340	402	330		
39	80	115	85	230	110	403	200		

## VALUATION DAYS

If you have antiques, fine art, jewellery or collectables that you are thinking of selling we would be delighted to provide complimentary valuation advice.

For items of a more general nature please feel free to visit our salerooms during our take-in days where we will be able to accept entries for our weekly sales. Alternatively, you may prefer to email us an image of items by simply contacting the relevant department.

It is also possible to arrange a home visit by one of our valuers for larger consignments.

### Leamington Spa

12noon - 4pm

Tuesday 23 April

Tuesday 28 May

Tuesday 25 June

Tuesday 23 July

Tuesday 27 August

Tuesday 24 September

Tuesday 29 October

Tuesday 26 November